

# Product brochure



weavabel®

# Find what you're looking for

Introduction to Weavabel	03	Sustainable poly bags	26
How we can help you	04	Packaging	28
Our stitch-to-store concept	05	Weavabel product innovations	31
Brands we've worked with	06	Real-time traceability	32
Our expertise	07	Radio frequency identification (RFID)	33
See what our customers have to say	08	Near field communication (NFC)	34
Certified sustainability	09	Our design & sampling service	35
Our product range	11	Quality control & compliance	36
Innovative, sustainable materials	12	Online ordering	37
Labels	15	Global footprint	38
Care labels	17	Meet the team	39
Trims	19	Path to sustainability	40
Accessories	20	Let's get started	42
Tapes	22	Weavabel custom range board	42
Swing tickets	23	Contact details	43





# The home of sustainable, innovative branded trims and packaging

We're Weavabel, a team of experts making branding sustainable for fashion, sportswear, homeware and luxury brands across the globe. Sustainability is paramount in today's climate. Our trims, branding and packaging empower you to meet your environmental goals.

We work with brands like yours to develop, produce and deliver innovative solutions that enhance your brand image at every stage of the supply chain. Whether it's the poly bags that protect your product throughout distribution, the swing tags in-store or the added extras like quality leathers and pin badges, we'll work with you to create the best results possible.

Innovation is at the heart of everything we do. We're constantly developing the next best materials, sustainable alternatives and impactful designs that enhance how you meet your customers' needs.

Want to learn more about what we offer and the range of products we have available?

Then this is the brochure for you.

# How we help you

Our stitch-to-store model supports you throughout the branded packaging and trim process. We'll start by developing an innovative concept and take the project all the way through to the production and delivery of your packaging and trims, no matter where you're located.

We're your trusted partner. The people you can rely on. Working with over 950 brands and with production facilities in more than 10 countries, we're always on hand to help you with any requirements.





# What we can do for you

Your ethical, certified branding partner that supports the design, delivery, development and distribution of your products from stitch-to-store.

How does it work? As your single branding, trims and packaging specialist, we supply labels to your manufacturers, poly bags for your distribution, swing tags and trims ready for customer sales and finally, custom packaging for you to deliver your products to your end consumer more smoothly.



## Step 1:

Woven and care labels added at manufacturing.



## Step 2:

Swing tags and trims added at the finishing stage.



## Step 3:

Poly bags used throughout the supply chain.



## Step 4:

Packaging to enhance the customer experience.

## What are the benefits of our stitch-to-store model?

- ✓ Consistent high-quality branding >
- ✓ Reduced costs through our expertise >
- ✓ Reduced lead times >
- ✓ Reduced carbon footprint >
- ✓ Certified sustainability >
- ✓ Ordering flexibility >
- ✓ Global stock holding >
- ✓ Access to innovative products and materials >
- ✓ Full traceability and clear supply chains >
- ✓ Technologically advanced >
- ✓ Sustainability and legislation support >
- ✓ Save time with a dedicated account manager >
- ✓ A support network of UK and worldwide trims and packaging specialists >
- ✓ Complete end-to-end brand management from design to delivery >

# Brands we've worked with



Pepe Jeans LONDON ROMAN CEFINN GUCCI Barbour wed2b COPA

ZADIG&VOLTAIRE MÔNOT  CHARLES TYRWHITT JERMYN STREET LONDON FIORUCCI  SOSANDAR Réalisation™

LARE DOUJ HUSH REPRESENT ORLEBAR BROWN ALLSAINTS DIOR THE WHITE COMPANY LONDON 



# Our expertise

950+



Fashion, homeware and sportswear brand partners

400+



Clothing brands helped by us to become more sustainable

50+



production facilities around the world

200M+



Units produced annually

70+



Countries shipped to in the last 12 months

40+



Years of experience

# See what our customers have to say

Our case studies offer a little deeper insight into the working relationships we build with our customers both new and old and cover subjects from brand design to sustainable fashion. We recognise that giving control of your garment branding to someone outside of your organisation is a big commitment, so we want you to feel comfortable knowing that we are worthy of your trust.

## Wed2B



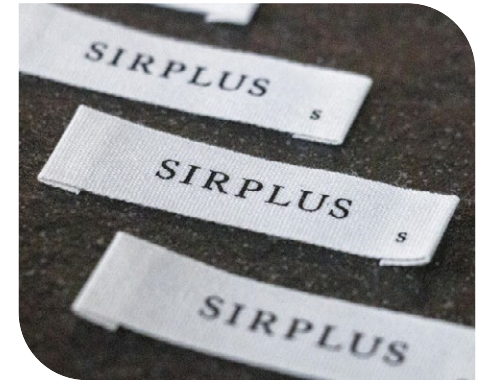
## On Running



## Altura



## Sirplus



## Les Lunes



## Aries Arise



## The White Company



## Clements & Church





# Certified sustainability

Sustainability certifications are critical in a world filled with greenwashing and vague sustainability claims. We are proud to hold so many certifications for our materials, products and business practices. Our certifications verify that our practices and products are eco-friendly.

## FSC® certified

The Forest Stewardship Council (FSC) certification protects our forests and their communities from being damaged.



## GOTS-certified

If our products are GOTS-certified, this proves that a material is at least 70% certified organic natural fibres, as it's traced from the field to the finished product.



## GRS-certified

GRS tracks and verifies the recycled material found in products and addresses traceability and sustainable practices throughout the supply chain. If a product is GRS-certified, you can be sure it's recycled.



## Sedex member

We work closely with Sedex, a sustainability solutions platform that allows us to monitor our supply chains closely, comply with regulations and maintain sustainability.



## OEKO-TEX Standard 100

The OEKO-TEX Standard 100 goes beyond sustainability. It ensures every part of a product, has been tested for harmful substances and is safe for human health.



## Retraced collaboration

Retraced is the leading platform for corporate sustainability due diligence in textile and fashion - enabling brands and retailers to be truly transparent.



# Certified sustainability

## UKFT member

We're a member of the UK Fashion & Textile Association (UKFT), a body dedicated to developing the industry through innovation, sustainability and collaboration.



## ISO 9001 & 1400 certified

ISO 9001 & 14001 are two certifications that monitor business management and procedures.

ISO 9001 assess and evaluates our quality management system.

ISO 14001 is the international standard that specifies requirements for an effective environmental management system (EMS).



## Higg Index member

The Higg Index was developed to help brands like ours measure the sustainability of its products, practices and supply chains.



## PEFC certification

When a PEFC logo appears on packaging, it provides assurance that the fibres it was made from were sourced from certified, sustainably managed forests.



## Recycled Blended certification

The RCS (Recycled Claim Standard) Certification signifies that a chain of custody standard has been followed to track recycled raw materials through the supply chain. It's an international and voluntary standard. A blended certification indicates a minimum of 5% recycled material has been used.



## Recycled 100 Certification

Part of the RCS (Recycled Claim Standard) Certification, Recycled 100 indicates a minimum of 95% of recycled content is used and a chain of custody standard has been followed which tracks recycled raw materials through the supply chain. This standard is internationally recognised.

RCS 100 indicates that a minimum of 95% of recycled content is used.



## Certifications

If you have any questions about these certifications, or others we may be able to provided, please speak to our experts at Weavabel who will be able to provide you with will be delighted to help.





# Our product range

## Brand & care labels

Made from recycled polyester, organic cotton, bamboo and more.



## Swing tags & seals

Made from FSC-certified papers or bamboo, stone and many other options.



## Badges & tapes

Made from recycled polyester, FSC-certified rubber, organic cotton and more.



## Leather & metal trims

Made from alternative leather materials and sustainable metal options.



## Heat transfers

From single-colour prints to technical silicone-printed raised transfers.



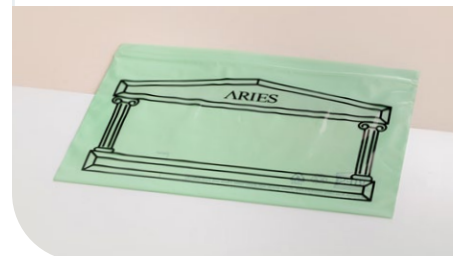
## E-commerce packaging

Kraft paper fluted boxes and mailing bags and envelopes.



## Poly bags

Made from recycled, water soluble or biodegradable materials.



## Gift packaging

Made from bamboo paper, kraft paper, organic cotton and more.



# Innovative, sustainable materials

Future-focused branding and packaging materials that make your brand stand out from the rest.

## FSC® paper

A certified sustainable and traceable paper that's biodegradable, recyclable and protects against harmful deforestation. Used for hang tags, overrides, woven bag handles, carrier bags, gift boxes and more.



## Organic cotton

An eco-friendly cotton material made from naturally cultivated plants, free from artificial agents, toxins, fertilisers or pesticides. Used for clothing labels, garment bags, swing tags and more.



## Recycled polyester

A GRS-certified man-made fibre produced using post-consumer PET waste. Recycled polyester is recycled and recyclable. Used for clothing labels, embroidered badges and more.



## Kraft paper

A strong, durable paper made with virgin wood pulp that's organic, recyclable, biodegradable and renewable. Used for carrier bags, hang tags, mailing bags, boxes and gift packaging.



## Recycled LDPE

Recycled and recyclable, GRS-certified plastic alternative made with post-consumer waste. Available with up to 100% recycled content. Used for storage and protection during garment distribution.



## FSC® rubber

A natural material using rubber that's sustainably sourced from FSC-certified forests, reducing the impact on the environment. Used for injection-moulded badges and more.



## Water soluble plastic

A PVA-based plastic that's biodegradable, recyclable and will dissolve in boiling water, reducing the amount of plastic waste going to landfill. Used for poly bags and more.



## Bamboo yarns

Made from bamboo grown in Asia, bamboo yarns are a regenerative and biodegradable material that requires less water to produce than cotton. Used for printed labels and tapes.





# Innovative, sustainable materials

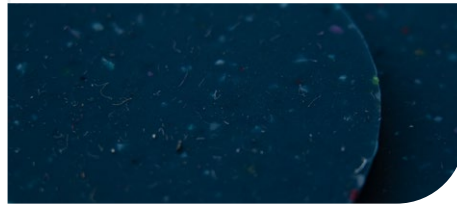
## Bamboo paper

A regenerative, biodegradable paper that requires fewer chemicals, water and no bleaching during production. Used for hang tags, carrier bags and more.



## Recycled silicone

A waterproof and durable material made from post-consumer silicone waste. The GRS-certified silicone reduces chemicals and emissions. Used for badges, patches and more.



## Recycled nylon

Produced using recycled post-consumer nylon, such as discarded fishing nets, this material can be used for care labels, injection-moulded badges and more.



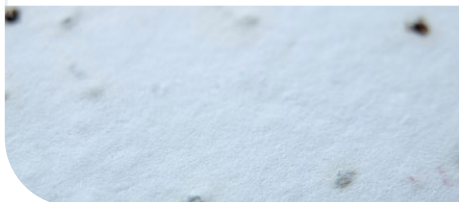
## Recycled leather

Manufactured using pre-consumer leather offcuts, reducing the impact of waste in landfill and on the environment. A luxury option used for patches, badges and more.



## Seed paper

A biodegradable paper that can be planted to grow wildflowers. It's also regenerative and sustainable. Used for swing tags, overrider tickets and more.



## Recycled TPU

A strong, durable plastic using 100% GRS-certified recycled materials, minimising the impact of plastic on the environment. Used for embossed badges, cord ends and more.



## Water-based PU leather

A vegan leather created using a polyurethane resin and water instead of toxic solvents, minimising harm to animals and the environment. Used for leather patches and more.



## Tencel

Created using wood cellulose from eucalyptus trees, Tencel yarns are biodegradable and compostable, reducing the amount of waste. Used for printed tapes and more.



# Innovative, sustainable materials

## Cellulose film

Is a clear and glossy material made of tree cellulose from PEFC forests. It is home compostable relieving pressure on waste systems and promoting a circular economy. Used as a garment bag as an alternative to a plastic bag.



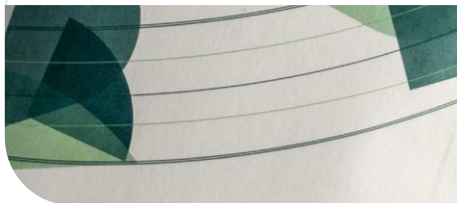
## Glassine paper

Glassine paper is semi-translucent, weather resistant, durable and can be FSC-certified. As it is paper it is easily recycled, promoting a circular economy. Used for paper envelope bags or gusseted garment bags.



## Paptic paper

Paptic is bio-based, renewable and recyclable material made from wood fibres. An FSC option is also available. As an eco-friendly alternative to using plastic in packaging it can be used for bags or mailing envelopes.



## Twisted paper string

A versatile, eco-friendly string option, featuring FSC accreditation. It can be matched to specific Pantone colours and is used for attaching hang tags and button bags to products.





## Labels

Labels should never be underestimated. They ensure consistency of your brand image, and when considering care labels, they're a legal requirement. Get them all in one place with us. We offer a quick ten-day turnaround on our care labels and can deliver any labels directly to garment factories, complete with certified status.

All of our label options can be customised to suit your specific branding and sustainability needs.





# Woven and printed labels

## Recycled polyester needleloom woven

GRS Certified.

Made from post-consumer plastic waste, reducing waste in landfill.



## Recycled polyester broadloom woven

GRS Certified.

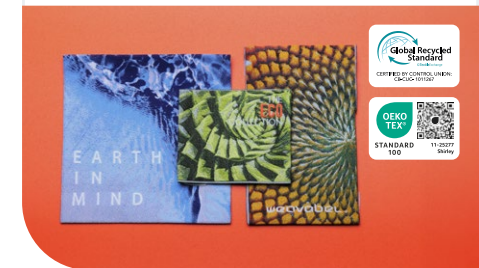
Made from post-consumer plastic waste, such as plastic bottles.



## Recycled polyester photographically woven

GRS Certified.

OEKO-TEX Standard 100.



## Recycled polyester printed

Broadloom premium high definition label, photographically printed.



## Organic cotton printed

Printed cotton, with raised silicone text.

Produced without harmful chemicals, fertilisers or pesticides.



## Silicone printed cotton

Textured ecru base with raised silicone print.





## Care labels

Care labels provide essential guidance about apparel care and cleaning procedures. For brands this is essential as damage caused from incorrect cleaning can impact their reputation as well as lead to complaints and costly returns. Care labels can also help guide and influence a customer's purchase.





# Care labels

## Recycled polyester satin printed care label

GRS Certified.  
Made using post-consumer waste.



## Recycled polyester fully woven care label

Broadloom premium high definition, 100% recycled.  
GRS Certified.



## Bamboo printed care label

Made from natural bamboo fibres, a renewable and biodegradable alternative to traditional polyester.



## Organic cotton printed care label

Organic cotton helps to reduce harmful chemicals used in the fashion industry.



## Recycled nylon printed care label

Made from post-consumer nylon, such as fishing nets.



## Recycled TPU printed care label

A recycled alternative to polyurethane.  
GRS certified.



IMPORTANT NOTICE: these Care Labelling Symbols are protected by intellectual property owned by GINETEX". Any use of these symbols requires prior authorization from GINETEX. For more information: [www.ginetex.net](http://www.ginetex.net)







## Trims

Sometimes, it's the finishing touches that help your brand stand out. That's where innovative trims come into play. Whether you're looking for badges, cord ends or tapes, we have all the eco-friendly options covered. Start exploring.

All of our trim options can be customised to suit your specific branding and sustainability needs.



# Accessories

## Recycled leather badge

Produced using bonded pre and post-consumer leather waste.



## Water-based PU leather badge

A vegan alternative to traditional leather.



## Apple leather badge

Bio-leather patches offer an animal-free alternative.



## Recycled polyester embroidered badge

100% recycled polyester.



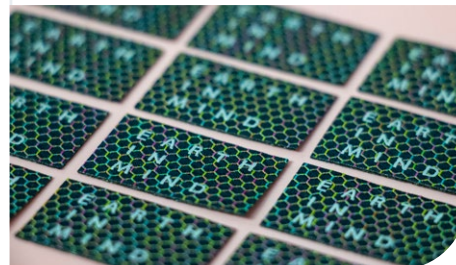
## Recycled nylon badge

Injection moulded recycled nylon, reducing landfill waste.



## Recycled polyester space-dyed woven badge

Reducing pollution by reusing existing materials.



## Recycled polyester printed badge

Textured base with raised silicone print.







# Accessories

## Recycled polyester embroidered badge

Woven base with space-dyed overlapped edge, honeycomb design.



## Recycled TPU badge

A durable material, reducing single-use plastics.

GRS Certified.



## Recycled silicone badge

Reducing waste, silicone can be infinitely recycled.

GRS Certified.



## Lead/nickle-free metal pin badge

Free from harmful chemicals.

OEKO-TEX Standard 100.



## Aluminium metal badge

Easily recyclable, powder coated.



## Recycled polyester cord & recycled TPU cord end

Fully recycled, durable materials that reduce pollution & landfill waste.

GRS Certified TPU.





## Tapes

### Bamboo woven printed tape

Made from sustainable and renewable bamboo fibres.

Printed or woven options.



### Recycled polyester elastic woven tape

Post-consumer 70% recycled yarn, 30% elastane.

Ideal for sustainable waistbands.



### Recycled polyester grosgrain printed tape

A sustainable option for luxury packaging products.

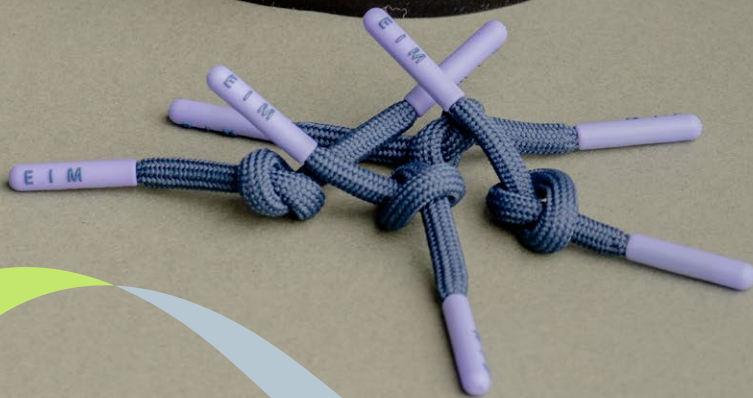
GRS Certified.



### Recycled nylon printed tape

Screen-printed tape made from regenerated nylon.

GRS Certified.





## Swing tickets

Swing tags are the perfect way to display your branding while providing essential customer and POS information. We have a wide range of recycled, recyclable and biodegradable paper options available, many with FSC certification. Our stringing options also keep the planet in mind, using jute, recycled cotton and twisted paper, all of which are sustainable and biodegradable.

We can include any barcodes, information or specifics you need before distributing to your vendors worldwide. Find your favourites.

All of our swing tag options can be customised to suit your specific branding and sustainability needs.





# Swing tickets

## Bamboo paper

Made from renewable bamboo fibres.  
Natural bamboo paper uses fewer chemicals in production than traditional paper and is recyclable.



## FSC mix paper

Paper from sustainably managed forests.  
Using certified paper reduces the risk of deforestation.  
FSC Certified.



## FSC recycled paper

Made from recycled paper.  
Using recycled materials minimises stress on natural resources.  
FSC Certified.



## Stone paper

Made from crushed stone.  
Uses 15% of the energy required for standard paper.  
67% less CO<sup>2</sup> released during production.



## Straw paper

Made from straw, reducing reliance on trees and agricultural waste.



## Coffee cup paper

Made from upcycled paper coffee cups, helping to reduce waste and reuse resources.



## Corn paper

Made using corn and maize manufacturing by-products.  
Recyclable, compostable and free of elemental chlorines and acids.  
FSC Certified.



## Oyster paper

Made from leather manufacturing by-products.  
Biodegradable and includes 40% post-consumer recycled waste.  
FSC Certified.



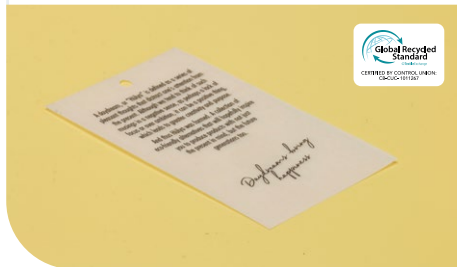


# Swing tickets

## Frosted paper

A sustainable alternative to acetate.

FSC Certified.



## Organic cotton

Organic cotton uses no toxic pesticides or fertilisers.

Naturally biodegradable.



## Biodegradable seal

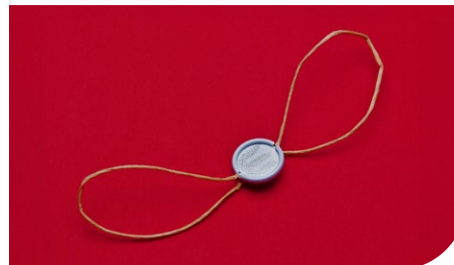
Using additives such as D2W, and twisted cotton string that is naturally biodegradable.



## Recyclable metal and paper seal

Twisted raffia paper string & metal.

Easily separated & recycled.





## Sustainable poly bags

Poly bags are an essential part of your supply chain, but there's often one big problem — they're single-use plastic. As sustainability and certifications become increasingly important in the face of government taxes and eco targets, we have sustainable poly bag options for you.

They're just as durable as traditional poly bags, meaning they'll protect your products effectively throughout the manufacturing and distribution processes. And with our stitch-to-store model, we can produce your poly bags at a location near you, further reducing your carbon footprint.

All of our poly bag options can be customised to suit your specific branding and sustainability needs.



# Sustainable poly bags

## Recycled LDPE

Recycled Low-Density Polyethylene.  
Recycled and recyclable.  
Global Recycled Standard (GRS).  
0.03mm-0.15mm.



## Recycled LDPE + D2W

Recycled Low-Density Polyethylene with D2W additive. Recyclable and biodegradable. 18-24 months to biodegrade. EN 13432 Compliant.  
0.03mm-0.15mm.



## Recycled HDPE

Recyclable in most kerbside waste collections.  
Frosted.  
Made of: 30%, 50%, 70% or 100% recycled.  
Recommended Thickness: 60 micron.



## Green PE

Sugarcane ethanol LDPE.  
Recyclable.  
The Carbon Trust CO<sup>2</sup> Neutral.  
0.05mm-0.11mm.



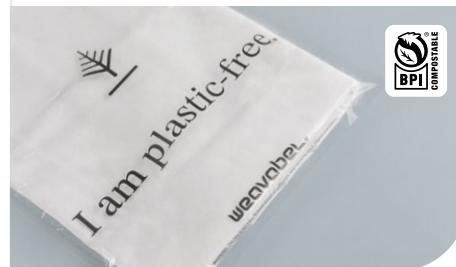
## Cornstarch

Cornstarch and modified biopolymers (PBAT, PLA).  
Biodegradable. 15-18 months to biodegrade. EN 13432 Compliant.  
OK Compost Certified.  
0.05mm-0.11mm.



## Spruce cellulose bag

Sourced from sustainable wood pulp.  
Home compostable.  
Thickness: 35gsm or 38gsm.



## Spruce paper bag

Durable, transparent paper.  
Reusable and recyclable.  
FSC certified.  
Translucent.  
Made of: 100% Paper



## Water soluble

Water soluble.  
Dissolves immediately in hot water.  
Marine-safe and non-toxic.





## Packaging

Packaging is a big part of the picture when delivering your products to the end consumer. We have multiple e-commerce, bag and gift packaging options available, so you can choose branded solutions that work, no matter whether you retail your products online or in-store.

We're always developing new, innovative practices to incorporate into our packaging offering, so if you have a project you'd like expert support with, don't hesitate to reach out.

Using our stitch-to-store model, we'll work with you from concept to global delivery, ready for your products to reach the customer in the best way possible.

**All of our packaging options can be customised to suit your specific branding and sustainability needs.**



# E-commerce packaging

Are you looking for Kraft mailing bags? Or would you prefer plastic, but want to make sure it's sustainable? We've got you covered.



## Kraft fluted flat-pack mailer box

FSC Recycled Certified.

Easily recyclable with household waste.



## Kraft mailing bag

FSC Recycled Certified.

Recyclable and biodegradable.

Strong and durable.



# Gift packaging

Are you looking for luxury options that don't cost the Earth? Then you've come to the right place. Create the ultimate unboxing experience with our gift packaging range. Fully customisable to suit your (and your customers') needs, find the options that add value, create a lasting impression and can be used by customers again and again.



## Kraft paper carrier bag

Easily recyclable with household waste.

FSC mix certified.



## Bamboo paper carrier bag

Recyclable and renewable.

Alternative to traditional paper packaging.



## FSC mix flat-pack gift box

Recyclable.



## Kraft flat-pack gift box

No magnets included to improve recyclability.

Recyclable paper string closure.



## Organic cotton dust bag

Brushed cotton, produced without chemicals, fertilisers or pesticides.





# Weavabel product innovations

We specialise in developing innovative solutions for all your trims and packaging needs - leading the way by using cutting-edge designs and sustainable materials.

Our experienced Research, Innovation and Design Teams are constantly exploring new technologies and trends to provide brands with effective and advanced textile solutions.

## Moka active collection

In honour of World Coffee Day, we have highlighted sustainable branding alternatives through coffee for trims and packaging.



## Packaging collection

From e-commerce boxes to tissue paper and everything in between, this Weavabel collection covers all your packaging needs.



## Spruce collection

Includes the paper alternative to plastic bags as well as the clear cellulose bag which is plastic-free but looks just like a polybag.



## Recycle collection

This collection uses recycled or upcycled materials to provide circular options that help preserve the earth's resources. Get inspired.



## Ocean collection

We have invested in our environment by developing clothing trims and packaging that will help ease the burden of waste in our seas.



## Earth collection

Our Earth in Mind Collection offers quality, eco-friendly branding and trims that are responsibly sourced and produced.



# Real-time traceability

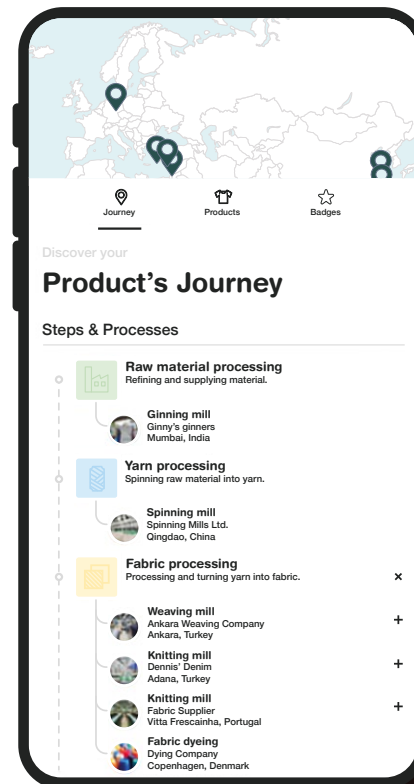
As a consumer, you are conscious of what you buy. Governments are introducing more legislation to reach sustainability goals meaning that brands and retailers need to be transparent. Get real-time traceability of your production process to support your corporate sustainability due diligence.

- Supplier mapping
- Product traceability
- Material traceability

Weavabel has collaborated with the leading platform for traceability in the fashion and retail industry, Retraced. Gain standardised validation from transaction and scope certificates for GRS, RCS, GOTS, RWS as well as audit certifications like BSCI, SMETA, WCA amongst many others.

- Powerful compliance management
- Full transparency down to the raw material
- A network of 8,000+ fashion and textile companies

Collaborating with  retraced







# Radio frequency identification (RFID)

Transform inventory management with RFID for greater supply chain visibility.

This technology allows objects to be wirelessly identified using data transmitted via radio waves. Data is scanned and uploaded via cloud software that immediately updates your stock files.

Here are some of the key benefits of stock availability, inventory management and lost prevention in your tags and labels:

- Efficient omnichannel operations
- Increase sales by 2-7%
- Increase inventory accuracy to over 95%
- 10-20% stock saving
- Reduce stock counting hours
- Accurate and fast access to information
- Enhance sustainability
- Improve customer satisfaction



# Near field communication (NFC)

## Why NFC?

- Product authentication
- Product and supply chain transparency and customer education
- For products such as labels, tickets and badges
- Simply scan the product with your mobile phone to access the data
- Products can be encoded with variable data in batches, or simple data in one production

## NFC chip composition

- Base material: PET
- Antenna: Aluminium

## Washability of NFC chips

- Safe for standard home wash
- Not recommended for dry-clean





# Our design & sampling service

## Design

Our in-house graphic design team will help with your initial ideas and draw up the full product range that you require.

## Consultation

We present the artwork and consult with your team to ensure the technical drawings are reflecting the correct brand image.

## Specification and sampling

Once your designs have been finalised, the items are specified in detail to make sure the quality of your product will reflect the brand image you want to portray.

## Refinement

When the samples are completed, we'll receive your feedback and can either rearrange further sampling or proceed to bulk production if you feel that the samples achieve the desired results.





# Quality control & compliance

## Regular audits

All Weavabel production facilities are independently audited to ensure production meets or exceeds all local legislation and requirements, including social and factory audits. Detailed reports are available upon request.

## Quality control

Quality commitment is agreed with all our manufacturing facilities. All production is cross-checked against your approved samples in our warehouse before dispatch to ensure all products meet high quality standards.

## Transparency

With the increasing need for transparency and traceability in the fashion industry, we have a strong focus on compliance and are certified by FSC, GRS and the Standard 100 by Oeko-Tex.





# Online ordering

## Vendor portal

We'll provide your vendors with 24/7 access to our online ordering platform where they can view and order your trims. Pack sizes and prices are displayed for each product, along with the available stock in each location.

## Customer service

Our customer service team will process orders received via our website, email and phone. All orders are managed on our state-of-the-art ERP system. Once the stock has been produced, we'll dispatch direct to your vendors from our nearest distribution centre via DHL or another preferred delivery method.

## 48-hour dispatch

There's a guaranteed 48-hour dispatch for in-stock products, as they're stored locally so your vendors have quick delivery times and transactions in local currency. We'll liaise with factories to support and resolve any issues.

# Global footprint

Being global, we always think locally when dealing with your requirements, delivering our services wherever you and your vendors are in the world.

We are continually expanding our network of manufacturing locations and currently have warehousing facilities in eight of the key strategic manufacturing locations in the world.

- 1. Weavabel UK**  
Leeds, UK
- 2. Weavabel China**  
Shenzhen, China
- 3. Weavabel Lda**  
Maia, Portugal
- 4. Weavabel HK Ltd**  
New Territories, Hong Kong
- 5. Weavabel Pakistan**  
Karachi, Pakistan
- 6. Weavabel India**  
New Delhi, India
- 7. Weavabel Turkey**  
Istanbul, Türkiye
- 8. Weavabel Bangladesh**  
Mirpur, Bangladesh
- 9. Weavabel Vietnam**  
Hanoi & Ho Chi Minh City







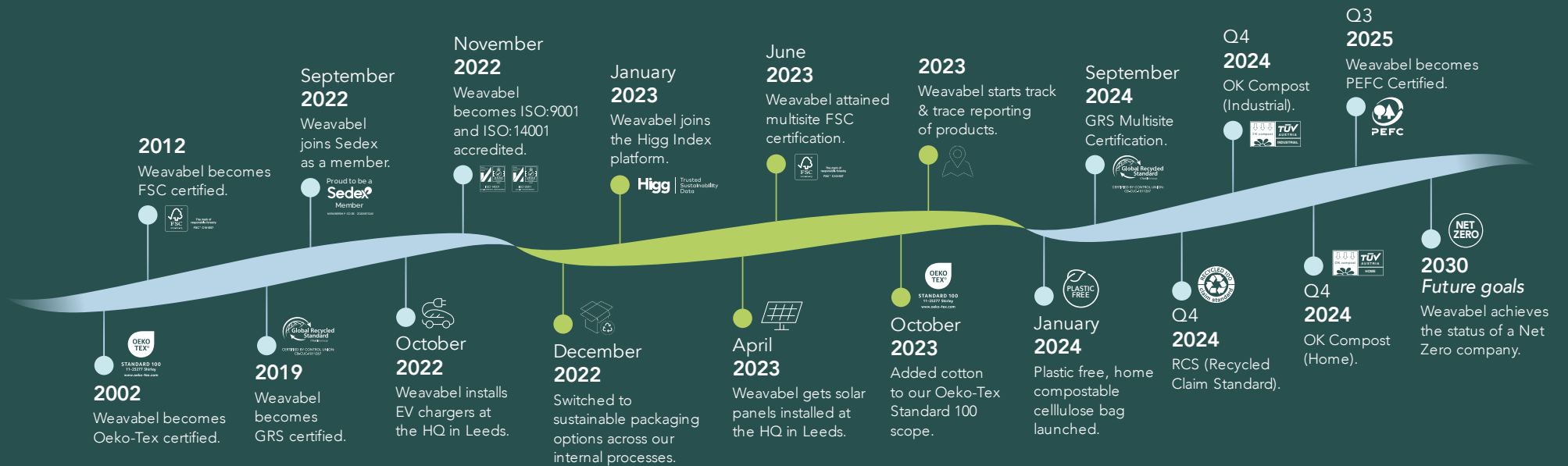
## Meet some of the Weavabel team

We're delighted to introduce you to our experienced, global team, here at Weavabel. Always here to support you and your brand from design to delivery of your trims and packaging needs.



# Path to sustainability

As the need to become more sustainable increases, and brands become more aware of the impact of their decisions, we are continuing to develop our own products and services to ensure that we can offer the most sustainable branding solutions.



## Our mission

Our aim as a company is to create sustainable branding and packaging solutions to the fashion industry - from design through to delivery. We want to make sustainable sourcing simple through providing traceability and consistency across your global supply chain.

If your brand has similar values, and you'd like to switch to more sustainable alternatives, take the first step with Weavabel.

# Traceability. Sustainability. Consistency.

Providing innovative branding and packaging throughout your global supply chain.



Maintain integrity



Take ownership



Exceed expectations



Keep agile



Continuous innovation



Remain humble



# Let's get started

Ready to discover what we can achieve together? Get in touch with a member of our helpful team and we'll take you through the options that are right for you, making your supply chain run more smoothly.



## Or, discover your brand's potential with a Weavabel custom range board

Let us know your requirements and we'll build you a bespoke range board filled with packaging and trim options, just like the ones you've seen in this brochure.







**weavabel**®

We look forward to  
working with you

3 Focus Business Park, Focus Way,  
Yeadon, Leeds LS19 7DB UK

+44 (0)113 239 1122  
sales@weavabel.com

[www.weavabel.com](http://www.weavabel.com)